

European Economics Analyst

Euro Area Outlook 2024: Fading Headwinds

- 2023 has been a mixed year for the Euro area. Initially, the economy showed surprising resilience to the energy crisis, defying expectations for recession. Growth has disappointed since the spring, however, reflecting ongoing negative effects from high gas prices, a large drag from monetary tightening and weak global industrial activity. As a result, Euro area growth underperformed the US notably this year.
- We expect 2024 to be a better year for the Euro area economy for three reasons. First, we look for growth to pick up as these headwinds diminish. Real disposable income is set for a notable boost as headline inflation slows sharply and nominal wage growth remains firm, supporting consumer spending. The negative credit drag should recede notably in H1 as the ECB holds rates steady. And we look for manufacturing growth to normalise, even though the upside is limited as the global industrial environment remains mixed.
- We expect these receding headwinds to more than outweigh a rising fiscal drag and look for area-wide growth of 0.9% next year, slightly ahead of consensus. Looking across countries, we expect 0.6% in Germany, 1.1% in France, 0.7% in Italy and 1.7% in Spain.
- Second, we expect underlying inflation to normalise in 2024. Core inflation has cooled more than expected in recent months—with sequential core inflation now running at around 2½%—and wage growth is showing clear signs of deceleration. We expect the labour market to remain broadly resilient—with only a modest increase in the unemployment rate—but look for the normalisation in wage growth to continue, as the effects of past high headline inflation fade. We lower our projection for core inflation over the next year and now expect core inflation to fall to 2.7%yoy by mid-2024 (vs 2.9%yoy before).
- Third, we look for a more supportive ECB next year. Given progress with underlying inflation, we now expect the first deposit rate cut in 2024Q3 (vs 2024Q4 before)—with the possibility of a Q2 cut if growth surprises to the downside—and expect the ECB to lower the deposit rate by 25bp per quarter until reaching 2.5% in 2025Q4. We maintain our view that the Governing Council will taper its PEPP reinvestments in Q2.
- Another spike in natural gas prices—caused by a cold winter and/or escalating geo-political tensions—could put renewed upward pressure on headline inflation

Sven Jari Stehn

+44(20)7774-8061 | jari.stehn@gs.com
Goldman Sachs International

Filippo Taddei

+44(20)7774-5458 |
filippo.taddei@gs.com
Goldman Sachs International

Christian Schnittker

+44(20)7774-2269 |
christian.schnittker@gs.com
Goldman Sachs International

James Moberly

+44(20)7774-9444 |
james.r.moberly@gs.com
Goldman Sachs International

Alexandre Stott

+33(1)4212-1108 |
alexandre.stott@gs.com
Goldman Sachs Bank Europe SE - Paris
Branch

Ibrahim Quadri

+44(20)7774-5864 |
ibrahim.quadri@gs.com
Goldman Sachs International

Katya Vashkinskaya

+44(20)7774-4833 |
katya.vashkinskaya@gs.com
Goldman Sachs International

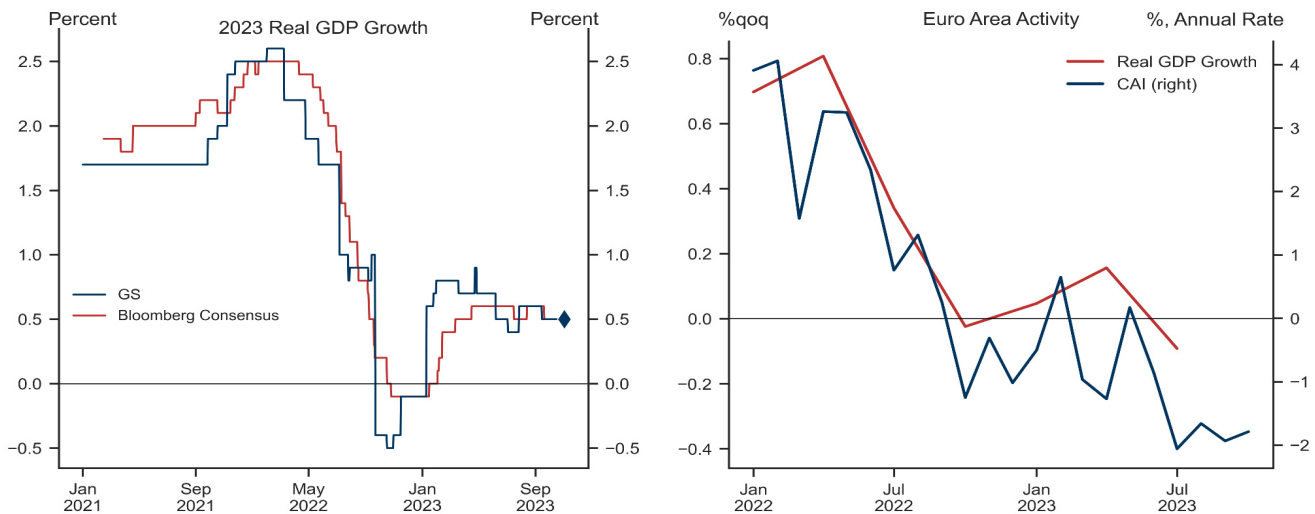
and mute the recovery in real household incomes. But we would expect only small spillovers to underlying inflation (given subdued demand and a high price level) and limited risks to gas balances (given high storage levels, lower demand and higher LNG imports).

- The more fundamental risk is that budget tensions in Italy could move back into focus given slowing nominal growth, higher interest rates and elevated deficits. Our central expectation is that any fiscal tensions remain manageable as Italian growth improves and the EU institutional backdrop remains supportive. But fiscal tensions could reappear and weigh on area-wide growth via tighter financial conditions and additional budget consolidation.

Fading Headwinds

The Euro area’s 2023 economic performance has come in two parts (Exhibit 1). Initially, the economy showed surprising resilience to the energy crisis and defied expectations for a recession. This reflected significant fiscal support, substitution away from gas to other energy sources and new liquid gas supply routes.

Exhibit 1: Resilient First Half, Disappointing Second Half



Source: Goldman Sachs Global Investment Research, Haver Analytics, Bloomberg

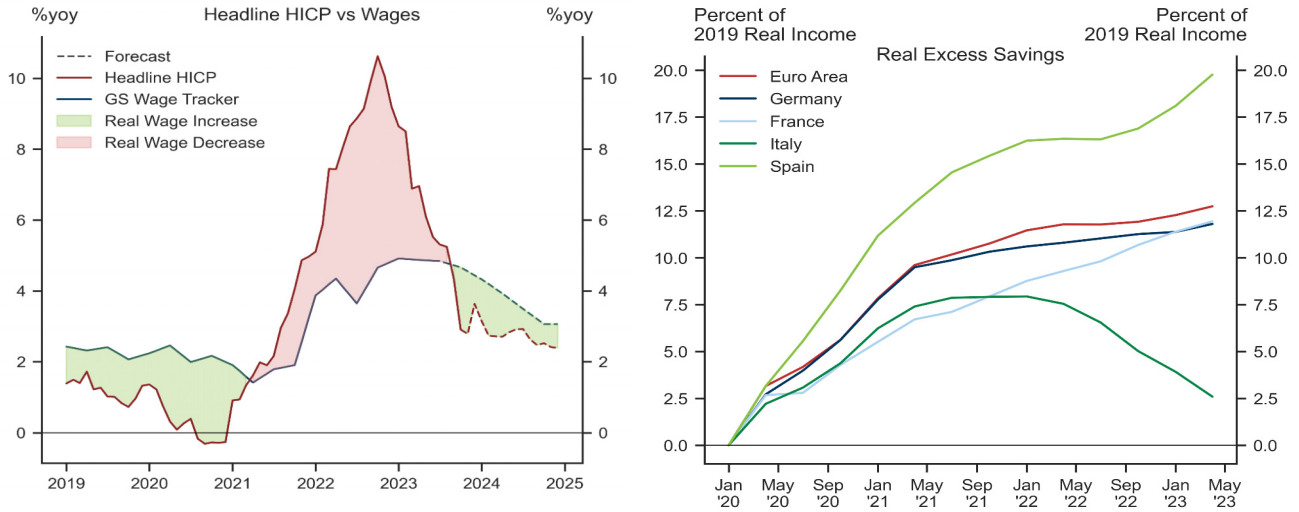
Since the spring, however, growth has disappointed given (1) ongoing negative effects from high gas prices, (2) a large drag from the ECB’s tightening and (3) modest growth abroad, especially in China. As a result, Euro area growth underperformed the US notably this year and we look for continued subdued growth in Q4 at 0.1%qoq (not annualised).

Receding Headwinds

We see three main reasons to look for better growth in 2024.

First, household real incomes are likely to receive a significant boost from continued firm nominal wage gains and sharply falling headline inflation. Following a contraction until early 2023, we look for a 2.8% real disposable income gain in 2024. Rising disposable income combined with strong household balance sheets—households have still not unwound their pandemic savings, except in Italy—should provide a significant boost to consumer spending.

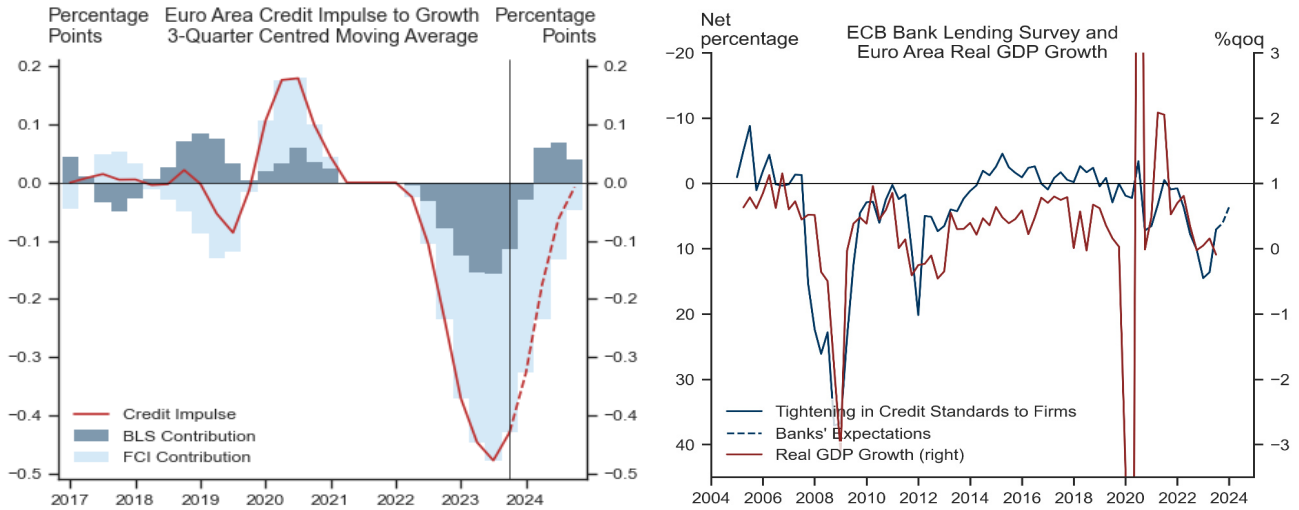
Exhibit 2: A Consumer Tailwind



Source: Goldman Sachs Global Investment Research, Haver Analytics

Second, our analysis suggests that the credit drag on growth is likely to diminish rapidly in 2024. Combining our financial conditions index (FCI) with the ECB’s Bank Lending Survey of lending conditions, we estimate that tighter credit conditions shaved almost 0.5pp off growth in Q3 (Exhibit 3, left). We find that the drag will remain elevated in Q4 but then diminish sharply in Q1 and Q2 next year. The intuition can be seen in Exhibit 3 (right), which shows that growth tends to respond to changes in credit conditions with a short lag.

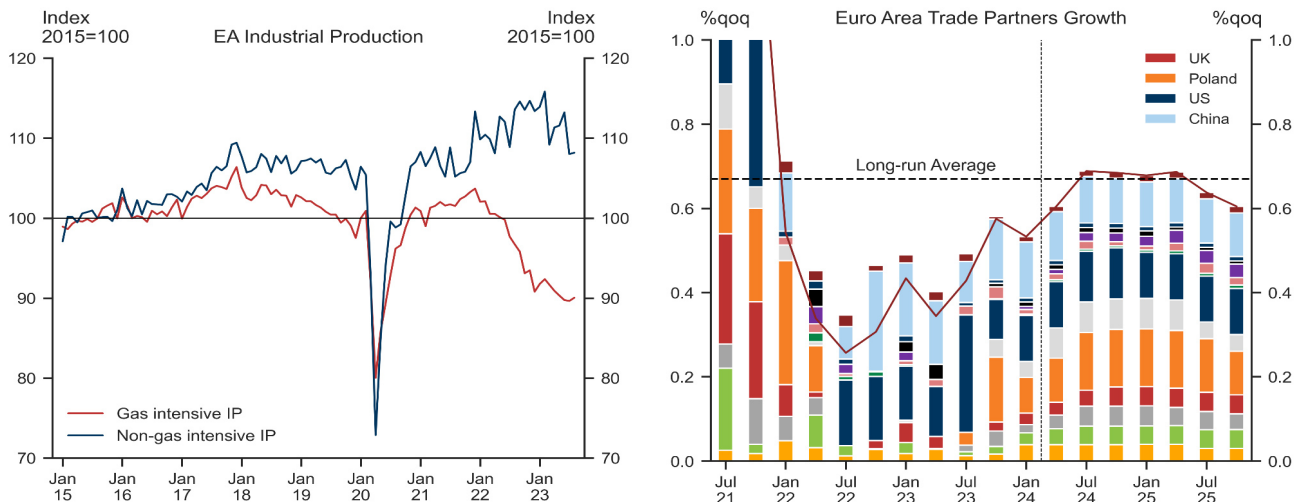
Exhibit 3: A Fading Credit Drag



Source: Goldman Sachs Global Investment Research, Haver Analytics, ECB

Third, we look for improvement in manufacturing activity over the next year. Some relief should come from energy-intensive sectors, where production looks to have bottomed as the adjustment to higher energy prices has advanced. And some relief should come from abroad as the global inventory drawdown comes to an end and the goods cycle picks up. That said, we do not look for the levels of European manufacturing activity to return to pre-covid levels, as energy prices remain much higher than before the pandemic and growth in China has slowed.

Exhibit 4: Some Manufacturing Relief

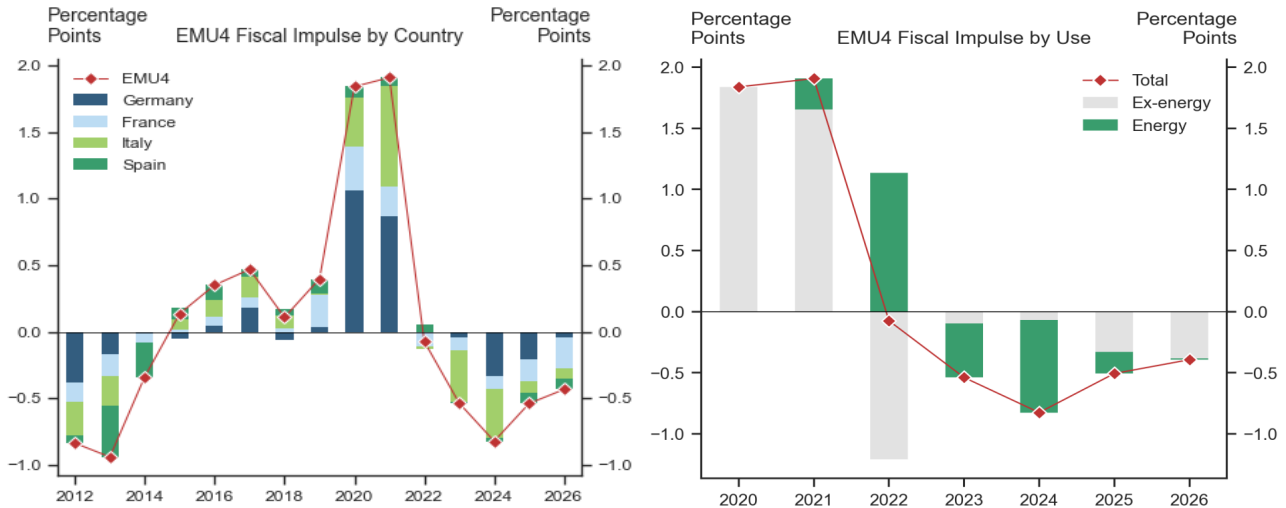


Source: Goldman Sachs Global Investment Research, Haver Analytics

The main headwind building into 2024 is fiscal policy, mostly reflecting the end of energy support measures and the normalisation of post-pandemic fiscal support. We estimate that the fiscal growth drag will build from 0.5pp in 2023 to about 0.8pp in 2024, and remain negative in 2025-26. The higher fiscal drag is largely due to Germany's removal of energy support policies and Italy's discontinuation of construction tax credits in 2024, with France and Spain providing a more backloaded contribution in 2025 and

2026.

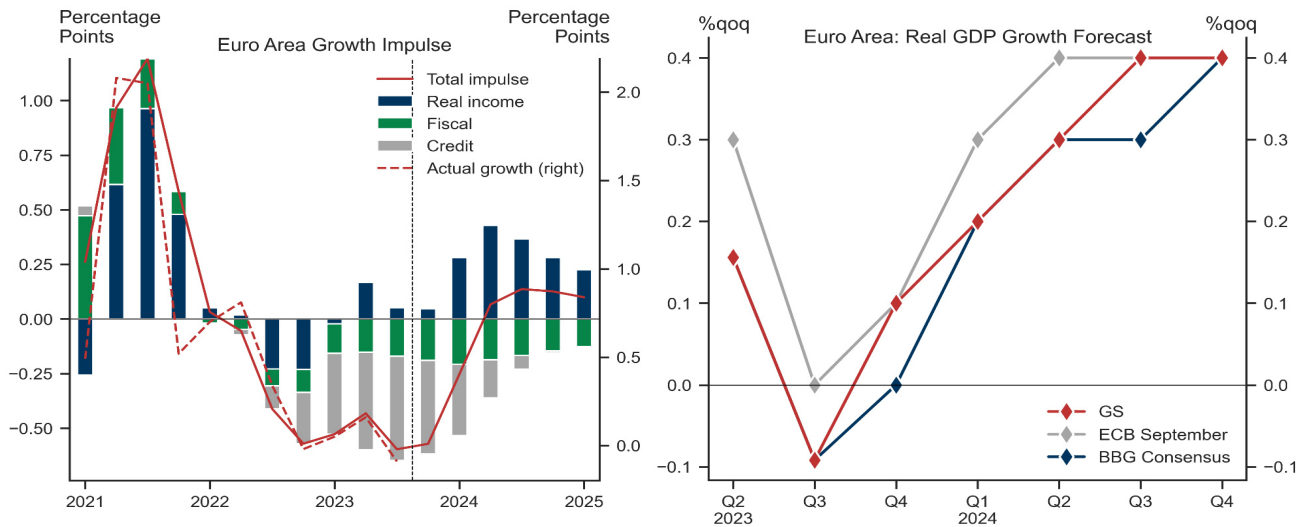
Exhibit 5: More Fiscal Drag in 2024, As Energy Support Measures Unwind



Source: Goldman Sachs Global Investment Research

On net, our analysis of the growth tailwinds and headwinds points to better growth next year (Exhibit 6, left). We estimate that the net impulse should remain significantly negative in Q4 but then improve notably in Q1 and Q2 as the credit drag fades and the boost from lower inflation comes through. Our analysis then points to a slightly above-trend growth pace in 2024H2.

Exhibit 6: A Growth Pickup in 2024



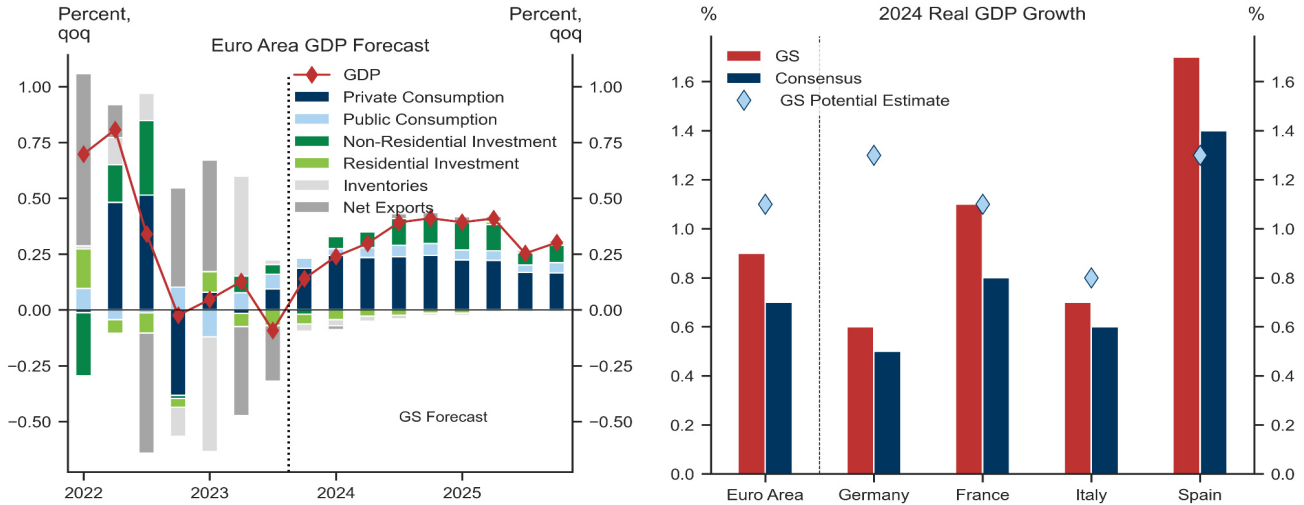
Source: Goldman Sachs Global Investment Research, Bloomberg, ECB

Consistent with this, we look for a significant growth pickup in H1, with 0.2% in Q1 and 0.3% in Q2, followed by 0.4% in H2 (Exhibit 6, right). Our forecast is below the ECB’s September staff projections but slightly above consensus.

Looking across components, we expect consumer spending to drive the pickup in growth in 2024, outweighing a drag from trade and residential investment (Exhibit 7,

left). We expect business investment to grow steadily in coming years, reflecting support from the Recovery Fund and energy-related initiatives. Looking across countries, we expect 0.6% growth in Germany, 1.1% in France, 0.7% in Italy and 1.7% in Spain (Exhibit 7, right).

Exhibit 7: Looking Across Components and Countries



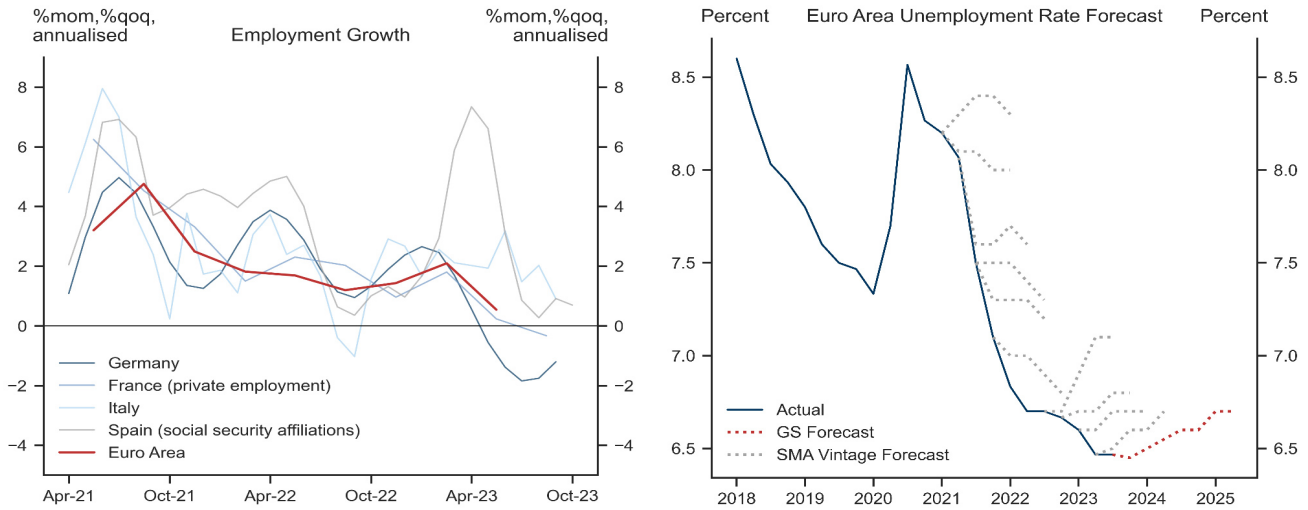
Source: Goldman Sachs Global Investment Research, Bloomberg

Next year’s growth drivers are likely to vary a bit across Euro area countries. In Germany, we expect the consumer to drive the majority of the growth improvement, as real disposable income recovers despite the removal of government support, and the saving rate continues to normalise. In France, we see less scope for a rebound in real disposable income—which has been buffered by generous fiscal support—and instead look for a normalisation of the household saving rate, which has remained higher than in other countries in the region. We expect a more muted consumer boost in Italy (given some upward pressure on the saving rate) but the reacceleration in implementation of the Recovery Fund should support capital expenditure. Spain, by contrast, should benefit from both continued consumption resilience and elevated investment growth.

Continued Disinflation

Given below-trend growth this year, the labour market has started to slow and is likely to weaken gradually over the next year. We expect employment growth to stall in coming quarters and push up the unemployment rate over the next year. Given our expectations for somewhat better growth next year, we expect only a limited deterioration of the labour market, with the area-wide unemployment rate rising from 6.5% at the moment to 6.7% over the next year.

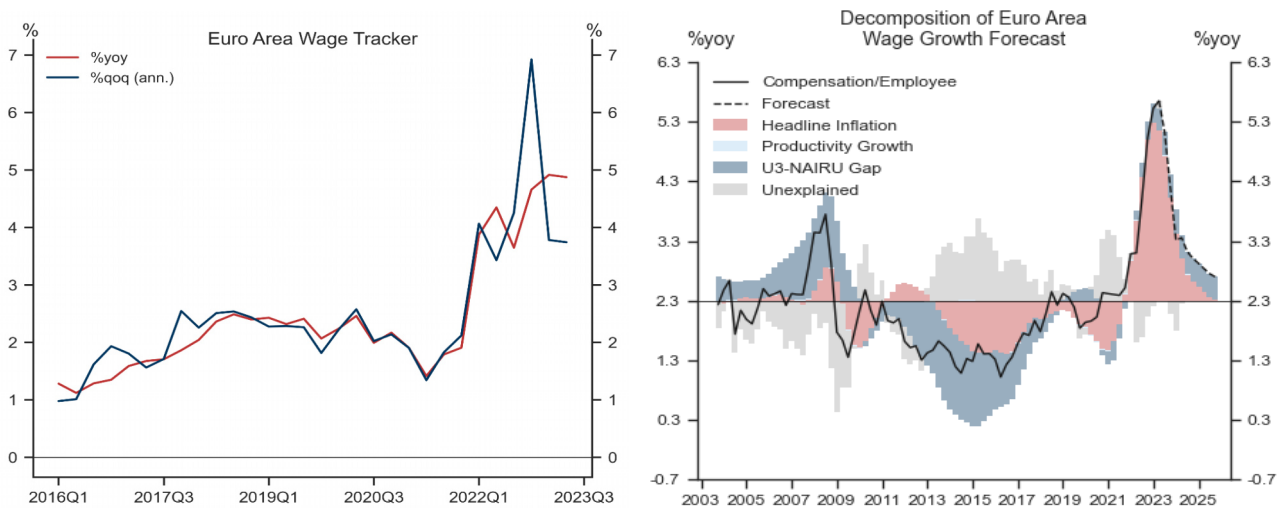
Exhibit 8: A Gradual Weakening of the Labour Market



Source: Goldman Sachs Global Investment Research, Haver Analytics, ECB

Wage growth, however, has already started to cool and is likely to normalise further over the coming year. This is because our analysis suggests that catch-up effects to past headline inflation have been the key driver of wage strength, and we look for pay growth to decelerate to around 4%yoy by end-2023 and almost 3%yoy by end-2024. The wage negotiations running from December to March—including hospitality services in Germany and public employees in Italy—will be a key guidepost to confirming the cooling of labour cost pressures.

Exhibit 9: Cooling Wage Growth

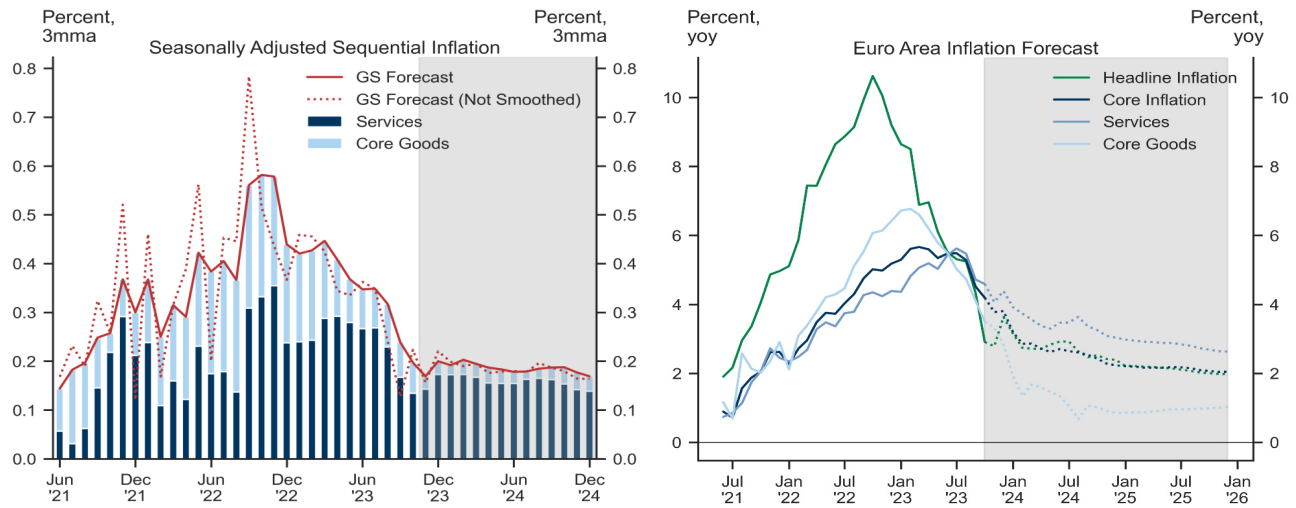


Source: Goldman Sachs Global Investment Research, Haver Analytics

Underlying inflation measures have likewise shown significant improvement. In particular, we estimate that sequential core inflation has slowed from an annualised pace of 5½% in Q1 to about 2½% over the last three months. Most of the cooling so far reflects weaker core goods inflation, as energy prices have come down and global bottlenecks have eased. But sequential services inflation has slowed, too, and is likely to

continue its deceleration as wage growth normalises.

Exhibit 10: More Progress with Disinflation



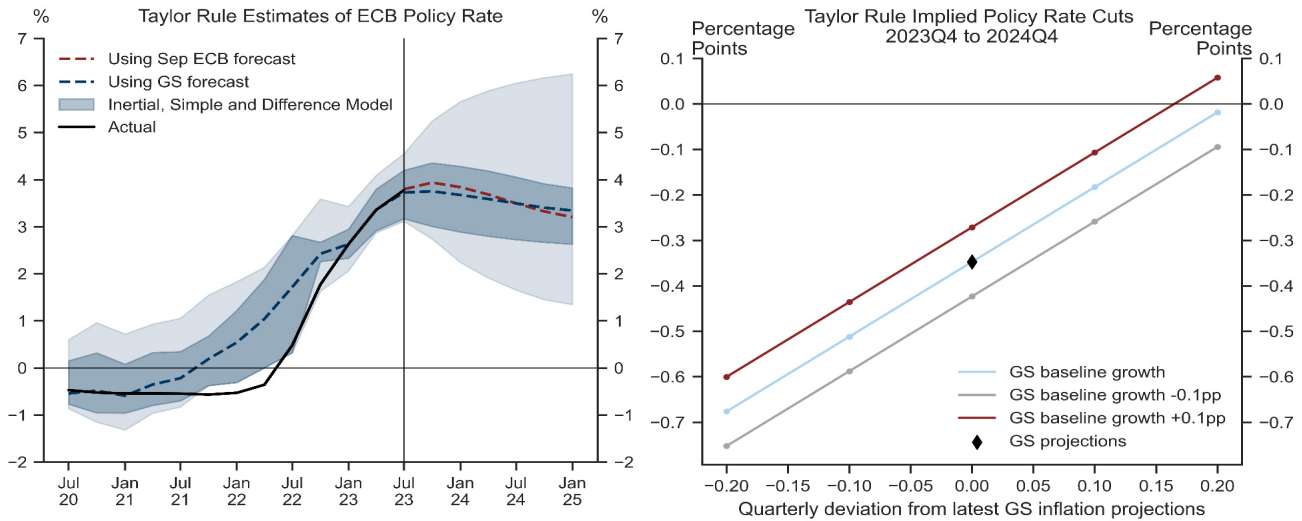
Source: Goldman Sachs Global Investment Research, Haver Analytics

Given the better inflation news, we slightly lower our inflation forecast for the year ahead and look for core inflation to reach 2.7%yoy in mid-2024 (vs 2.9% before), 2.2%yoy in December 2024 (vs 2.3%yoy before) and 2%yoy at the end of 2025 (vs 2.1% before).

Earlier ECB Cut, Higher Long-Term Rate

Given the encouraging news on inflation, we expect the ECB to remain firmly on hold. While recent communication has left the door open for additional tightening, we see a high hurdle for more hikes, consistent with our estimated Taylor rule framework, which points to an extended period with the deposit rate at 4% (Exhibit 11, left). Recent commentary has emphasised the importance of the 2024 wage negotiations—most of which occur between December and March—to confirm that pay pressures are normalising as expected. This, we believe, signals that the hurdle for rate cuts is high until Q2.

Exhibit 11: ECB Now Firmly on Hold

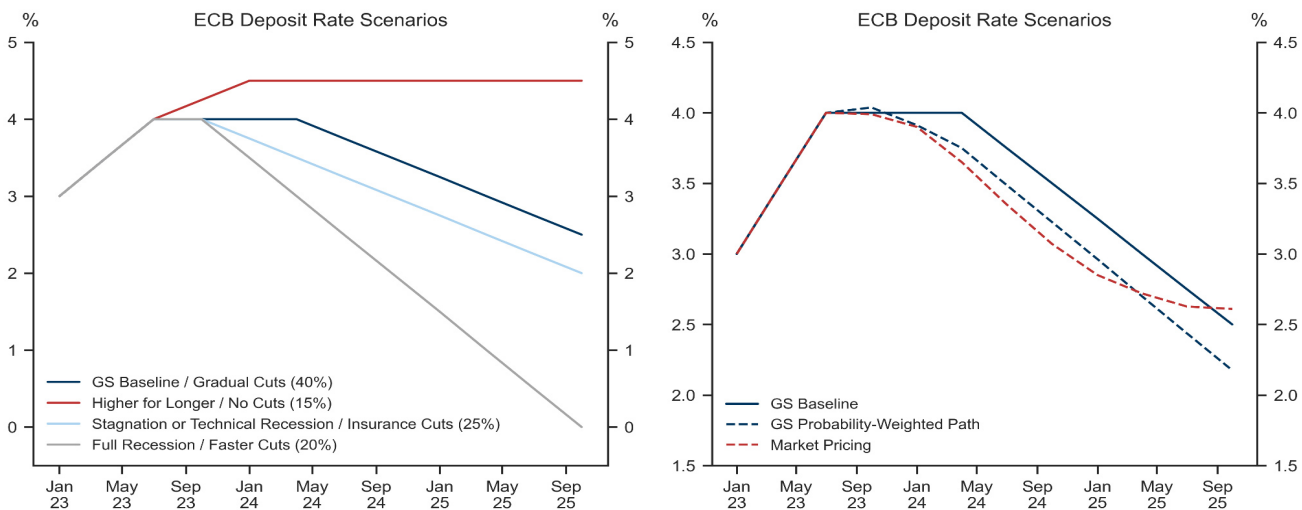


Source: Goldman Sachs Global Investment Research, Haver Analytics, ECB

Given our forecast for weaker core inflation in 2024H1, we pull forward our forecast for the first cut from 2024Q4 to 2024Q3—consistent with the predictions from our updated Taylor rule—and now look for two 25bp cuts next year. That said, a Q2 cut is possible if growth and/or inflation surprise to the downside, and we would expect the Governing Council to lower the deposit rate more quickly if the economy slides into recession (Exhibit 11, right).

As a result, the risks around our central path for the deposit rate are skewed to the downside. Exhibit 12 presents stylised scenarios and shows that the GS probability-weighted path is significantly below our modal forecast but slightly above current market pricing.

Exhibit 12: Our Probability-Weighted Deposit Rate Forecast is Below Our Modal Baseline Forecast

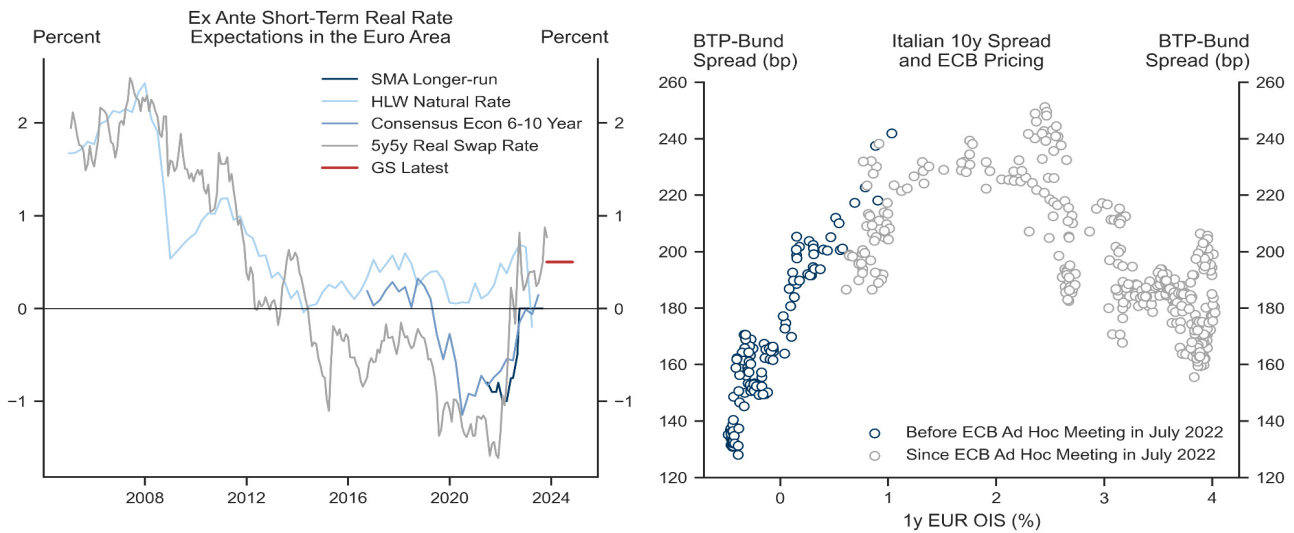


Source: Goldman Sachs Global Investment Research, Bloomberg

Looking further ahead, we raised our long-term deposit rate forecast from 2% to 2.5%. Recent estimates of the equilibrium rate point to an increase since the pandemic to a

range of -1.5% to 0.5% in real terms (Exhibit 13, left). We see a number of reasons to believe that the equilibrium rate has increased and now stands at the upper end of this range, including changes in European fiscal policy, a strong co-movement between global rates and advances of the Euro area’s institutional architecture, including the ECB’s new anti-fragmentation tools. In particular, the more muted co-movement between policy rates and sovereign spreads points to the need for a higher terminal policy rate to ensure that inflation returns to 2% (Exhibit 13, right).

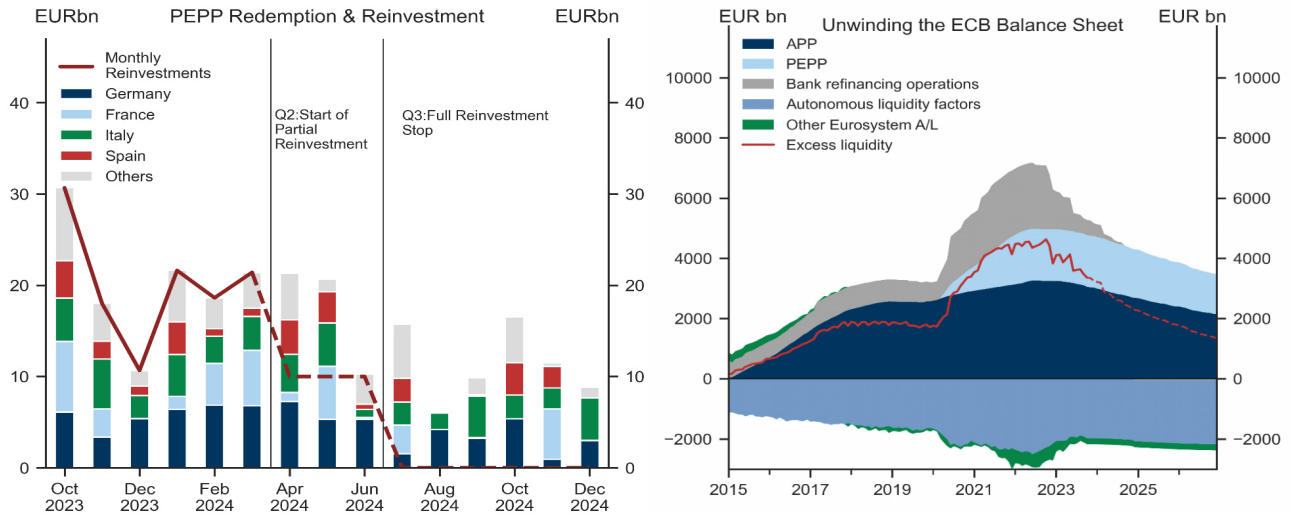
Exhibit 13: A Higher Equilibrium Rate



Source: Goldman Sachs Global Investment Research, Haver Analytics, ECB, Consensus Economics, Bloomberg

Turning to the balance sheet, we expect a gradual move towards ending PEPP reinvestments (Exhibit 14). In particular, we expect the Governing Council to limit PEPP reinvestments in 2024Q2 to EUR 10bn per month, before stopping all reinvestments from 2024Q3. But we expect ECB officials to proceed carefully, with a formal decision in Q1 and flexibility to amend the monthly target (across time and countries) depending on the dynamics of financing conditions. That said, a further rise in European bond yields or an earlier rate cut could push back the timeline for tapering PEPP reinvestments. We do not expect any changes to the ECB’s reserve remuneration parameters until the operational framework has been concluded in the spring.

Exhibit 14: Partial PEPP Reinvestments from Q2, No Change to Reserve Remuneration until Spring



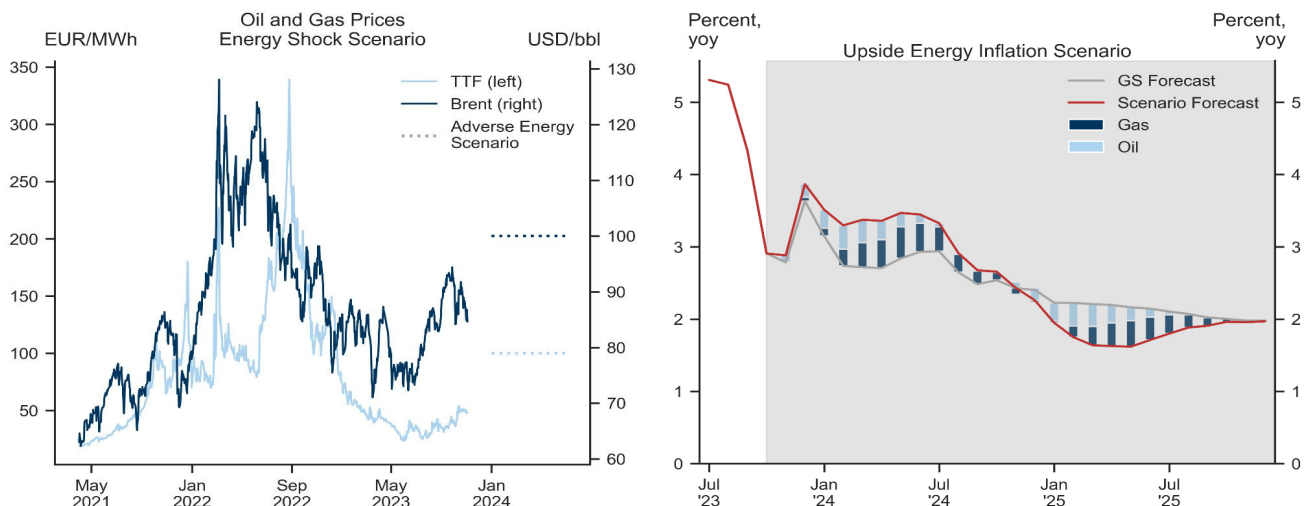
Source: Goldman Sachs Global Investment Research, Haver Analytics

Sources of Uncertainty

The European economic outlook remains unusually uncertain and we will be focusing on two particular risk factors.

The first is a renewed spike in natural gas prices, caused by a cold winter and/or escalating geo-political tensions. Our commodity team laid out such a scenario in which oil prices rise to \$100/bbl and European gas prices spike to 100 EUR/MWh. We estimate that higher energy prices in this scenario would put renewed upward pressure on headline inflation (up 0.7pp at the peak in March/April) and mute the expected recovery in real household incomes (lowering real GDP growth via consumption by 0.1-0.2pp in each of 2024Q1 and Q2).

Exhibit 15: Inflation Risks from Renewed Energy Pressures

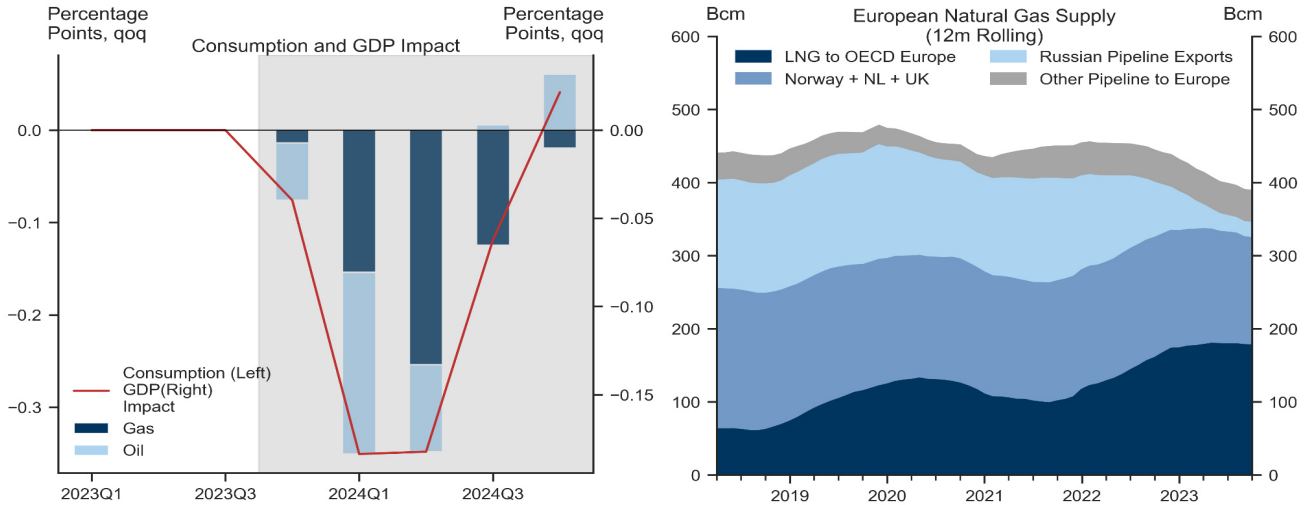


Source: Goldman Sachs Global Investment Research, Haver Analytics

But we would see only small effects on underlying inflation, as the propagation of the

energy shock would likely be muted by subdued demand and contractionary monetary policy. Moreover, we see more limited risks to gas balances tightening than last winter given high EU gas storage levels, lower demand across the region and higher LNG imports.

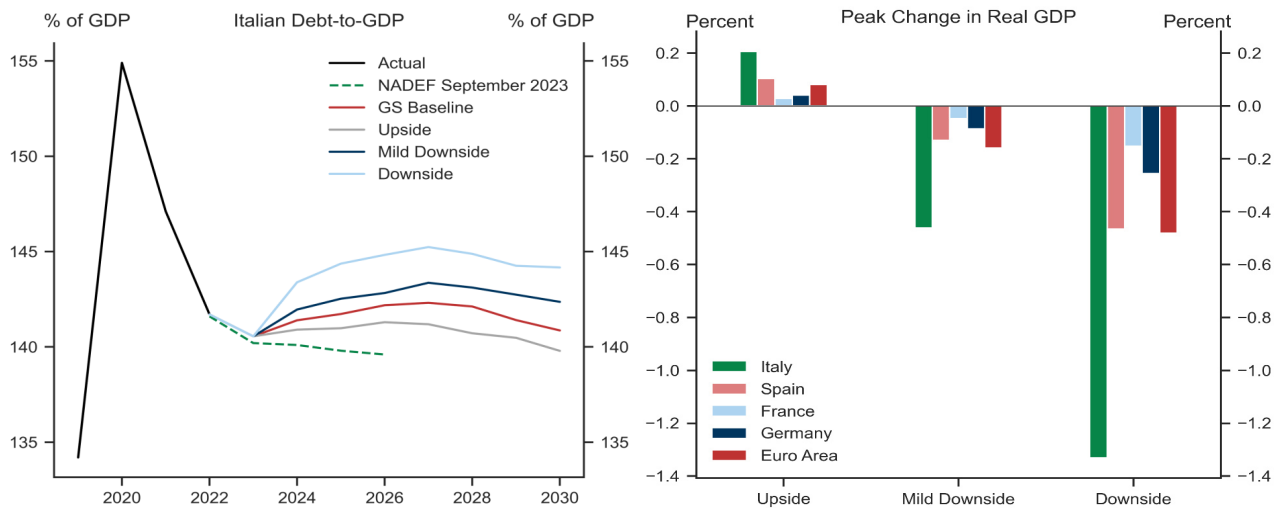
Exhibit 16: But More Limited Risks to Activity



Source: Goldman Sachs Global Investment Research, Haver Analytics

The more fundamental risk is that budget tensions in Italy could move back into focus given slowing nominal growth, higher interest rates and elevated deficits. Our central expectation is that the BTP-Bund spread drifts moderately wider in coming months but that any fiscal tensions remain manageable as Italian growth improves, Recovery Fund implementation re-accelerates and the EU institutional backdrop remains supportive.

Exhibit 17: Potential Spillovers from Italian Budget Tensions



Source: Goldman Sachs Global Investment Research, Haver Analytics, Italian Ministry of Finance

More severe fiscal tensions could reappear and weigh on growth via tighter financial conditions and additional budget consolidation. Our scenario analysis points to an area-wide output cost of 0.2% in a mild downside scenario, where 10-year BTP-Bund spreads widen to 250bp and the debt-to-GDP ratio rises more notably, but additional

fiscal consolidation in Italy and the EU institutional architecture anchor yields and limit the fallout for growth. We estimate that the area-wide GDP cost could rise to 0.5% in a downside scenario, where a 10-year BTP-Bund spread widening to 300bp calls into question the sustainability of Italy's debt and a sharper fiscal adjustment clears the way for the ECB to signal its willingness to activate the TPI. Ultimately, investors will likely focus on the ability of the Italian government to respond promptly to building tensions through fiscal adjustment, which is key to securing continued support from EU institutions, including the Commission and the ECB.

European Economics Team

Disclosure Appendix

Reg AC

We, Sven Jari Stehn, Filippo Taddei, Christian Schnittker, James Moberly, Alexandre Stott, Ibrahim Quadri and Katya Vashkinskaya, hereby certify that all of the views expressed in this report accurately reflect our personal views, which have not been influenced by considerations of the firm's business or client relationships.

Unless otherwise stated, the individuals listed on the cover page of this report are analysts in Goldman Sachs' Global Investment Research division.

Disclosures

Regulatory disclosures

Disclosures required by United States laws and regulations

See company-specific regulatory disclosures above for any of the following disclosures required as to companies referred to in this report: manager or co-manager in a pending transaction; 1% or other ownership; compensation for certain services; types of client relationships; managed/co-managed public offerings in prior periods; directorships; for equity securities, market making and/or specialist role. Goldman Sachs trades or may trade as a principal in debt securities (or in related derivatives) of issuers discussed in this report.

The following are additional required disclosures: **Ownership and material conflicts of interest:** Goldman Sachs policy prohibits its analysts, professionals reporting to analysts and members of their households from owning securities of any company in the analyst's area of coverage.

Analyst compensation: Analysts are paid in part based on the profitability of Goldman Sachs, which includes investment banking revenues. **Analyst as officer or director:** Goldman Sachs policy generally prohibits its analysts, persons reporting to analysts or members of their households from serving as an officer, director or advisor of any company in the analyst's area of coverage. **Non-U.S. Analysts:** Non-U.S. analysts may not be associated persons of Goldman Sachs & Co. LLC and therefore may not be subject to FINRA Rule 2241 or FINRA Rule 2242 restrictions on communications with subject company, public appearances and trading securities held by the analysts.

Additional disclosures required under the laws and regulations of jurisdictions other than the United States

The following disclosures are those required by the jurisdiction indicated, except to the extent already made above pursuant to United States laws and regulations. **Australia:** Goldman Sachs Australia Pty Ltd and its affiliates are not authorised deposit-taking institutions (as that term is defined in the Banking Act 1959 (Cth)) in Australia and do not provide banking services, nor carry on a banking business, in Australia. This research, and any access to it, is intended only for "wholesale clients" within the meaning of the Australian Corporations Act, unless otherwise agreed by Goldman Sachs. In producing research reports, members of Global Investment Research of Goldman Sachs Australia may attend site visits and other meetings hosted by the companies and other entities which are the subject of its research reports. In some instances the costs of such site visits or meetings may be met in part or in whole by the issuers concerned if Goldman Sachs Australia considers it is appropriate and reasonable in the specific circumstances relating to the site visit or meeting. To the extent that the contents of this document contains any financial product advice, it is general advice only and has been prepared by Goldman Sachs without taking into account a client's objectives, financial situation or needs. A client should, before acting on any such advice, consider the appropriateness of the advice having regard to the client's own objectives, financial situation and needs. A copy of certain Goldman Sachs Australia and New Zealand disclosure of interests and a copy of Goldman Sachs' Australian Sell-Side Research Independence Policy Statement are available at: <https://www.goldmansachs.com/disclosures/australia-new-zealand/index.html>. **Brazil:** Disclosure information in relation to CVM Resolution n. 20 is available at <https://www.gs.com/worldwide/brazil/area/gir/index.html>. Where applicable, the Brazil-registered analyst primarily responsible for the content of this research report, as defined in Article 20 of CVM Resolution n. 20, is the first author named at the beginning of this report, unless indicated otherwise at the end of the text. **Canada:** This information is being provided to you for information purposes only and is not, and under no circumstances should be construed as, an advertisement, offering or solicitation by Goldman Sachs & Co. LLC for purchasers of securities in Canada to trade in any Canadian security. Goldman Sachs & Co. LLC is not registered as a dealer in any jurisdiction in Canada under applicable Canadian securities laws and generally is not permitted to trade in Canadian securities and may be prohibited from selling certain securities and products in certain jurisdictions in Canada. If you wish to trade in any Canadian securities or other products in Canada please contact Goldman Sachs Canada Inc., an affiliate of The Goldman Sachs Group Inc., or another registered Canadian dealer. **Hong Kong:** Further information on the securities of covered companies referred to in this research may be obtained on request from Goldman Sachs (Asia) L.L.C. **India:** Further information on the subject company or companies referred to in this research may be obtained from Goldman Sachs (India) Securities Private Limited, Research Analyst - SEBI Registration Number INH000001493, 951-A, Rational House, Appasaheb Marathe Marg, Prabhadevi, Mumbai 400 025, India, Corporate Identity Number U714140MH2006FTC160634, Phone +91 22 6616 9000, Fax +91 22 6616 9001. Goldman Sachs may beneficially own 1% or more of the securities (as such term is defined in clause 2 (h) the Indian Securities Contracts (Regulation) Act, 1956) of the subject company or companies referred to in this research report. Investment in securities market are subject to market risks. Read all the related documents carefully before investing. Registration granted by SEBI and certification from NISM in no way guarantee performance of the intermediary or provide any assurance of returns to investors. Goldman Sachs (India) Securities Private Limited Investor Grievance E-mail: india-client-support@gs.com. Compliance Officer: Anil Rajput | Tel: + 91 22 6616 9000 | Email: anil.m.rajput@gs.com. **Japan:** See below. **Korea:** This research, and any access to it, is intended only for "professional investors" within the meaning of the Financial Services and Capital Markets Act, unless otherwise agreed by Goldman Sachs. Further information on the subject company or companies referred to in this research may be obtained from Goldman Sachs (Asia) L.L.C., Seoul Branch. **New Zealand:** Goldman Sachs New Zealand Limited and its affiliates are neither "registered banks" nor "deposit takers" (as defined in the Reserve Bank of New Zealand Act 1989) in New Zealand. This research, and any access to it, is intended for "wholesale clients" (as defined in the Financial Advisers Act 2008) unless otherwise agreed by Goldman Sachs. A copy of certain Goldman Sachs Australia and New Zealand disclosure of interests is available at: <https://www.goldmansachs.com/disclosures/australia-new-zealand/index.html>. **Russia:** Research reports distributed in the Russian Federation are not advertising as defined in the Russian legislation, but are information and analysis not having product promotion as their main purpose and do not provide appraisal within the meaning of the Russian legislation on appraisal activity. Research reports do not constitute a personalized investment recommendation as defined in Russian laws and regulations, are not addressed to a specific client, and are prepared without analyzing the financial circumstances, investment profiles or risk profiles of clients. Goldman Sachs assumes no responsibility for any investment decisions that may be taken by a client or any other person based on this research report. **Singapore:** Goldman Sachs (Singapore) Pte. (Company Number: 198602165W), which is regulated by the Monetary Authority of Singapore, accepts legal responsibility for this research, and should be contacted with respect to any matters arising from, or in connection with, this research. **Taiwan:** This material is for reference only and must not be reprinted without permission. Investors should carefully consider their own investment risk. Investment results are the responsibility of the individual investor. **United Kingdom:** Persons who would be categorized as retail clients in the United Kingdom, as such term is defined in the rules of the Financial Conduct Authority, should read this research in conjunction with prior Goldman Sachs research on the covered companies referred to herein and should refer to the risk warnings that have been sent to them by Goldman Sachs International. A copy of these risks warnings, and a glossary of certain financial terms used in this report, are available from Goldman Sachs International on request.

European Union and United Kingdom: Disclosure information in relation to Article 6 (2) of the European Commission Delegated Regulation (EU)

(2016/958) supplementing Regulation (EU) No 596/2014 of the European Parliament and of the Council (including as that Delegated Regulation is implemented into United Kingdom domestic law and regulation following the United Kingdom's departure from the European Union and the European Economic Area) with regard to regulatory technical standards for the technical arrangements for objective presentation of investment recommendations or other information recommending or suggesting an investment strategy and for disclosure of particular interests or indications of conflicts of interest is available at <https://www.gs.com/disclosures/europeanpolicy.html> which states the European Policy for Managing Conflicts of Interest in Connection with Investment Research.

Japan: Goldman Sachs Japan Co., Ltd. is a Financial Instrument Dealer registered with the Kanto Financial Bureau under registration number Kinsho 69, and a member of Japan Securities Dealers Association, Financial Futures Association of Japan Type II Financial Instruments Firms Association, The Investment Trusts Association, Japan, and Japan Investment Advisers Association. Sales and purchase of equities are subject to commission pre-determined with clients plus consumption tax. See company-specific disclosures as to any applicable disclosures required by Japanese stock exchanges, the Japanese Securities Dealers Association or the Japanese Securities Finance Company.

Global product; distributing entities

Goldman Sachs Global Investment Research produces and distributes research products for clients of Goldman Sachs on a global basis. Analysts based in Goldman Sachs offices around the world produce research on industries and companies, and research on macroeconomics, currencies, commodities and portfolio strategy. This research is disseminated in Australia by Goldman Sachs Australia Pty Ltd (ABN 21 006 797 897); in Brazil by Goldman Sachs do Brasil Corretora de Títulos e Valores Mobiliários S.A.; Public Communication Channel Goldman Sachs Brazil: 0800 727 5764 and / or contatogoldmanbrasil@gs.com. Available Weekdays (except holidays), from 9am to 6pm. Canal de Comunicação com o Público Goldman Sachs Brasil: 0800 727 5764 e/ou contatogoldmanbrasil@gs.com. Horário de funcionamento: segunda-feira à sexta-feira (exceto feriados), das 9h às 18h; in Canada by Goldman Sachs & Co. LLC; in Hong Kong by Goldman Sachs (Asia) L.L.C.; in India by Goldman Sachs (India) Securities Private Ltd.; in Japan by Goldman Sachs Japan Co., Ltd.; in the Republic of Korea by Goldman Sachs (Asia) L.L.C., Seoul Branch; in New Zealand by Goldman Sachs New Zealand Limited; in Russia by OOO Goldman Sachs; in Singapore by Goldman Sachs (Singapore) Pte. (Company Number: 198602165W); and in the United States of America by Goldman Sachs & Co. LLC. Goldman Sachs International has approved this research in connection with its distribution in the United Kingdom.

Goldman Sachs International ("GSI"), authorised by the Prudential Regulation Authority ("PRA") and regulated by the Financial Conduct Authority ("FCA") and the PRA, has approved this research in connection with its distribution in the United Kingdom.

European Economic Area: GSI, authorised by the PRA and regulated by the FCA and the PRA, disseminates research in the following jurisdictions within the European Economic Area: the Grand Duchy of Luxembourg, Italy, the Kingdom of Belgium, the Kingdom of Denmark, the Kingdom of Norway, the Republic of Finland and the Republic of Ireland; GSI - Succursale de Paris (Paris branch) which is authorised by the French Autorité de contrôle prudentiel et de résolution ("ACPR") and regulated by the Autorité de contrôle prudentiel et de résolution and the Autorité des marchés financiers ("AMF") disseminates research in France; GSI - Succursale en España (Madrid branch) authorized in Spain by the Comisión Nacional del Mercado de Valores disseminates research in the Kingdom of Spain; GSI - Sweden Bankfilial (Stockholm branch) is authorized by the SFSA as a "third country branch" in accordance with Chapter 4, Section 4 of the Swedish Securities and Market Act (Sv. lag (2007:528) om värdepappersmarknaden) disseminates research in the Kingdom of Sweden; Goldman Sachs Bank Europe SE ("GSBE") is a credit institution incorporated in Germany and, within the Single Supervisory Mechanism, subject to direct prudential supervision by the European Central Bank and in other respects supervised by German Federal Financial Supervisory Authority (Bundesanstalt für Finanzdienstleistungsaufsicht, BaFin) and Deutsche Bundesbank and disseminates research in the Federal Republic of Germany and those jurisdictions within the European Economic Area where GSI is not authorised to disseminate research and additionally, GSBE, Copenhagen Branch filial af GSBE, Tyskland, supervised by the Danish Financial Authority disseminates research in the Kingdom of Denmark; GSBE - Succursale en España (Madrid branch) subject (to a limited extent) to local supervision by the Bank of Spain disseminates research in the Kingdom of Spain; GSBE - Succursale Italia (Milan branch) to the relevant applicable extent, subject to local supervision by the Bank of Italy (Banca d'Italia) and the Italian Companies and Exchange Commission (Commissione Nazionale per le Società e la Borsa "Consob") disseminates research in Italy; GSBE - Succursale de Paris (Paris branch), supervised by the AMF and by the ACPR disseminates research in France; and GSBE - Sweden Bankfilial (Stockholm branch), to a limited extent, subject to local supervision by the Swedish Financial Supervisory Authority (Finansinspektionen) disseminates research in the Kingdom of Sweden.

General disclosures

This research is for our clients only. Other than disclosures relating to Goldman Sachs, this research is based on current public information that we consider reliable, but we do not represent it is accurate or complete, and it should not be relied on as such. The information, opinions, estimates and forecasts contained herein are as of the date hereof and are subject to change without prior notification. We seek to update our research as appropriate, but various regulations may prevent us from doing so. Other than certain industry reports published on a periodic basis, the large majority of reports are published at irregular intervals as appropriate in the analyst's judgment.

Goldman Sachs conducts a global full-service, integrated investment banking, investment management, and brokerage business. We have investment banking and other business relationships with a substantial percentage of the companies covered by Global Investment Research. Goldman Sachs & Co. LLC, the United States broker dealer, is a member of SIPC (<https://www.sipc.org>).

Our salespeople, traders, and other professionals may provide oral or written market commentary or trading strategies to our clients and principal trading desks that reflect opinions that are contrary to the opinions expressed in this research. Our asset management area, principal trading desks and investing businesses may make investment decisions that are inconsistent with the recommendations or views expressed in this research.

We and our affiliates, officers, directors, and employees will from time to time have long or short positions in, act as principal in, and buy or sell, the securities or derivatives, if any, referred to in this research, unless otherwise prohibited by regulation or Goldman Sachs policy.

The views attributed to third party presenters at Goldman Sachs arranged conferences, including individuals from other parts of Goldman Sachs, do not necessarily reflect those of Global Investment Research and are not an official view of Goldman Sachs.

Any third party referenced herein, including any salespeople, traders and other professionals or members of their household, may have positions in the products mentioned that are inconsistent with the views expressed by analysts named in this report.

This research is focused on investment themes across markets, industries and sectors. It does not attempt to distinguish between the prospects or performance of, or provide analysis of, individual companies within an industry or sector we describe.

Any trading recommendation in this research relating to an equity or credit security or securities within an industry or sector is reflective of the investment theme being discussed and is not a recommendation of any such security in isolation.

This research is not an offer to sell or the solicitation of an offer to buy any security in any jurisdiction where such an offer or solicitation would be illegal. It does not constitute a personal recommendation or take into account the particular investment objectives, financial situations, or needs of individual clients. Clients should consider whether any advice or recommendation in this research is suitable for their particular circumstances and, if appropriate, seek professional advice, including tax advice. The price and value of investments referred to in this research and the income from them may fluctuate. Past performance is not a guide to future performance, future returns are not guaranteed, and a loss of original capital may occur.

Fluctuations in exchange rates could have adverse effects on the value or price of, or income derived from, certain investments.

Certain transactions, including those involving futures, options, and other derivatives, give rise to substantial risk and are not suitable for all investors. Investors should review current options and futures disclosure documents which are available from Goldman Sachs sales representatives or at <https://www.theocc.com/about/publications/character-risks.jsp> and https://www.fiadocumentation.org/fia/regulatory-disclosures_1/fia-uniform-futures-and-options-on-futures-risk-disclosures-booklet-pdf-version-2018. Transaction costs may be significant in option strategies calling for multiple purchase and sales of options such as spreads. Supporting documentation will be supplied upon request.

Differing Levels of Service provided by Global Investment Research: The level and types of services provided to you by Goldman Sachs Global Investment Research may vary as compared to that provided to internal and other external clients of GS, depending on various factors including your individual preferences as to the frequency and manner of receiving communication, your risk profile and investment focus and perspective (e.g., marketwide, sector specific, long term, short term), the size and scope of your overall client relationship with GS, and legal and regulatory constraints. As an example, certain clients may request to receive notifications when research on specific securities is published, and certain clients may request that specific data underlying analysts' fundamental analysis available on our internal client websites be delivered to them electronically through data feeds or otherwise. No change to an analyst's fundamental research views (e.g., ratings, price targets, or material changes to earnings estimates for equity securities), will be communicated to any client prior to inclusion of such information in a research report broadly disseminated through electronic publication to our internal client websites or through other means, as necessary, to all clients who are entitled to receive such reports.

All research reports are disseminated and available to all clients simultaneously through electronic publication to our internal client websites. Not all research content is redistributed to our clients or available to third-party aggregators, nor is Goldman Sachs responsible for the redistribution of our research by third party aggregators. For research, models or other data related to one or more securities, markets or asset classes (including related services) that may be available to you, please contact your GS representative or go to <https://research.gs.com>.

Disclosure information is also available at <https://www.gs.com/research/hedge.html> or from Research Compliance, 200 West Street, New York, NY 10282.

© 2023 Goldman Sachs.

No part of this material may be (i) copied, photocopied or duplicated in any form by any means or (ii) redistributed without the prior written consent of The Goldman Sachs Group, Inc.